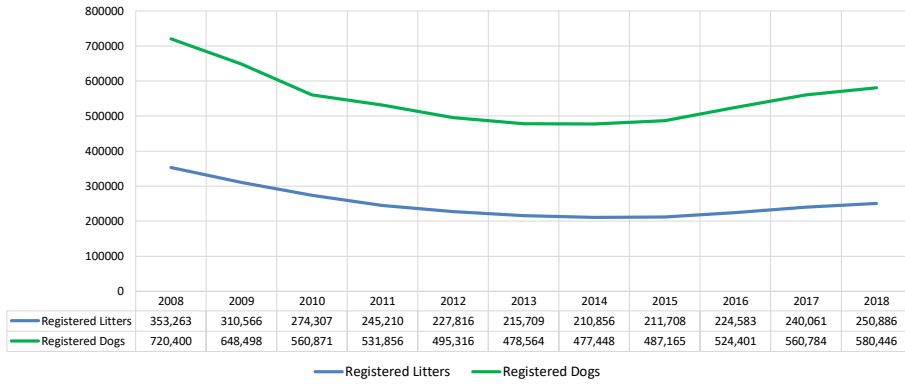


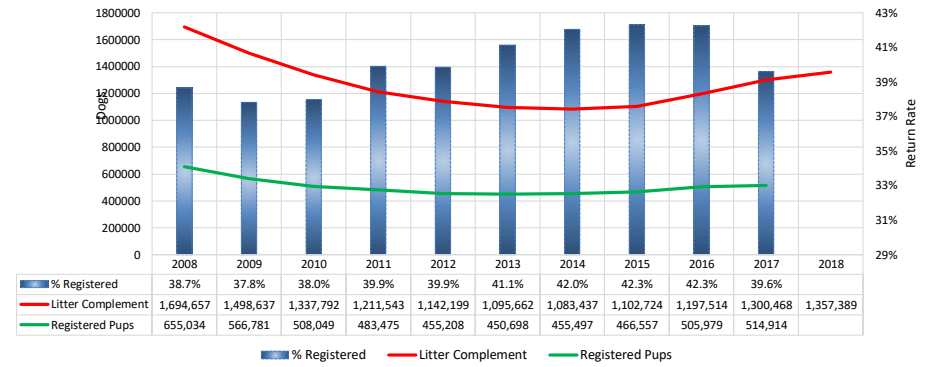
All Breeds (AKC only)													
Litter #'s & Litter Related Stats	Metric	2008	2009	2010	2011	2012	2013	2014	2015	2016	2017	2018	Notes
	Registered Litters	353,263	310,566	274,307	245,210	227,816	215,709	210,856	211,708	224,583	240,061	250,886	# AKC litters registered each year
Litter Complement	1,694,657	1,498,637	1,337,792	1,211,543	1,142,199	1,095,662	1,083,437	1,102,724	1,197,514	1,300,468	1,357,389	# Pups in each year's litters (known as the "Complement")	
Average Complement	4.80	4.83	4.88	4.94	5.01	5.08	5.14	5.21	5.33	5.42	5.41	Average # of pups per litter	
Individually Registered Pups (to date)	655,034	566,781	508,049	483,475	455,208	450,698	455,497	466,557	505,979	514,914	365,288	# Pups from each year's litters individually registered (to date)	
Actual Return Rate (to date)	38.7%	37.8%	38.0%	39.9%	39.9%	41.1%	42.0%	42.3%	42.3%	39.6%	26.9%	% Pups from each year's litters individually registered (to date)	
Limited Registrations (to date)	76,697	73,715	69,865	73,257	75,270	78,945	84,706	95,212	110,238	121,064	99,916	# Limited Registrations from each year's litters (to date)	
% Complement Registered Limited (to date)	4.5%	4.9%	5.2%	6.0%	6.6%	7.2%	7.8%	8.6%	9.2%	9.3%	7.4%	% Pups from each year's litters Registered as Limited (to date)	
Revoked Limited (to date)	1,496	1,560	1,311	1,444	1,456	1,597	1,710	1,888	1,673	1,099	394	# Revoked Limited Dogs from each year's litters (to date)	
Litters from Revoked Limited (to date)	1,400	1,421	1,220	1,311	1,348	1,497	1,597	1,755	1,582	1,053	384	Litters involving each year's Revoked Limited (to date)	
Complement Bitches Bred	99,583	89,683	81,504	77,088	76,981	75,365	74,420	70,771	61,728	30,793	4,117	Bitches from each year's litters that have been bred (to date)	
Complement Dogs Bred	58,465	51,204	45,879	42,283	40,500	38,527	37,359	35,490	32,822	20,689	3,016	Males from each year's litters that have been bred (to date)	
Total Complement Bred (to date)	158,048	140,887	127,383	119,371	117,481	113,892	111,779	106,261	94,550	51,482	7,133	Total from each year's litters that have been bred (to date)	
% Complement Bred (to date)	9.3%	9.4%	9.5%	9.9%	10.3%	10.4%	10.3%	9.6%	7.9%	4.0%	0.5%	% of each year's litters that have been bred (to date)	
Complement Bitches in Conformation	27,171	25,537	24,710	23,958	23,384	22,619	21,880	21,330	20,990	20,051	10,277	# Bitches from each year's litters in Conformation (to date)	
Complement Dogs in Conformation	21,605	20,041	19,551	18,997	18,519	17,381	16,932	16,053	16,011	14,894	7,928	# Males from each year's litters in Conformation (to date)	
Total Complement in Conformation (to date)	48,776	45,578	44,261	42,955	41,903	40,000	38,812	37,383	37,001	34,945	18,205	Total from each year's litters in Conformation (to date)	
% Complement in Conformation (to date)	2.9%	3.0%	3.3%	3.5%	3.7%	3.7%	3.6%	3.4%	3.1%	2.7%	1.3%	% of each year's litters in Conformation (to date)	
Total Complement in Companion (to date)	9,608	8,948	8,905	8,719	8,148	7,790	7,527	6,620	5,493	3,071	484	Total from each year's litters in Companion (to date)	
% Complement in Companion (to date)	0.57%	0.60%	0.67%	0.72%	0.71%	0.71%	0.69%	0.60%	0.46%	0.24%	0.04%	% of each year's litters in Companion (to date)	
Total Complement Placing in Performance (to date)	11,105	10,727	10,719	11,092	10,996	10,716	10,953	10,482	9,914	6,527	1,115	Total from each year's litters placing in Performance (to date)	
% Complement Placing in Performance (to date)	0.7%	0.7%	0.8%	0.9%	1.0%	1.0%	1.0%	1.0%	0.8%	0.5%	0.1%	% of each year's litters placing in Performance (to date)	
AKC Dog Registrations	699,564	632,524	546,482	517,480	480,689	465,652	463,592	473,207	510,691	546,256	564,582	# Registered from AKC Litters during each year	
FSS Registrations	8,730	5,327	4,059	4,481	3,995	2,646	3,028	1,673	415	348	218	# of FSS Dog Registrations each year	
Conditional Registrations	3,073	2,577	2,187	2,059	1,971	1,911	2,194	2,206	2,414	2,585	2,538	# of Conditional Registrations each year	
Open Registrations	1,338	1,042	1,375	1,334	1,650	1,623	1,552	2,305	1,827	1,599	1,620	# of Open Registrations each year	
Foreign Registrations	7,695	7,028	6,768	6,502	7,011	6,732	7,082	7,774	9,054	9,996	11,488	# of Foreign-born Registrations each year	
Total Dogs Registered	720,400	648,498	560,871	531,856	495,316	478,564	477,448	487,165	524,401	560,784	580,446	Total Dog Registrations each year	
Unique Bitches Bred (each year)	306,122	278,654	247,012	220,143	202,815	191,184	185,589	185,793	195,264	206,528	215,349	Unique # of bitches bred each year	
Unique Dogs Bred (each year)	201,042	183,979	162,989	144,984	131,226	122,939	118,079	116,388	119,477	124,323	128,925	Unique # of males bred each year	
Total Bred (each year)	507,164	462,633	410,001	365,127	334,041	314,123	303,668	302,181	314,741	330,851	344,274	Unique # bred each year	
Unique Bitches in Conformation (each year)	72,217	69,234	66,391	64,631	62,788	60,897	58,672	57,167	55,943	54,822	54,356	Unique # of bitches in Conformation each year	
Unique Dogs in Conformation (each year)	60,503	57,647	55,070	53,902	52,889	50,740	48,568	46,817	45,272	44,063	43,311	Unique # of males in Conformation each year	
Total Unique in Conformation (each year)	132,720	126,881	121,461	118,533	115,677	111,637	107,240	103,984	101,215	98,885	97,667	Unique # in Conformation each year	
% Change Conformation		-4.4%	-4.3%	-2.4%	-2.4%	-3.5%	-3.9%	-3.0%	-2.7%	-2.3%	-1.2%	YOY % Change Conformation total dogs	
Unique Bitches in Companion (each year)	20,159	19,968	19,803	20,408	20,636	20,354	19,980	19,694	19,554	19,022	18,920	Unique # of bitches in Companion each year	
Unique Dogs in Companion (each year)	18,402	18,251	18,368	18,772	19,002	18,852	18,743	18,262	18,072	17,466	17,222	Unique # of males in Companion each year	
Total Unique in Companion (each year)	38,561	38,219	38,171	39,180	39,638	39,206	38,723	37,956	37,626	36,488	36,142	Unique # in Companion each year	
% Change Companion		-0.9%	-0.1%	2.6%	1.2%	-1.1%	-1.2%	-2.0%	-0.9%	-3.0%	-0.9%	YOY % Change Companion total dogs	
Unique Bitches Placing in Performance (each year)	13,241	13,395	12,730	12,659	12,658	13,204	13,592	13,281	14,245	15,825	18,319	Unique # of bitches placing in Performance each year	
Unique Dogs Placing in Performance (each year)	13,376	13,562	12,924	12,676	12,493	12,857	13,233	13,016	13,573	14,988	17,303	Unique # of males placing in Performance each year	
Total Unique Placing in Performance (each year)	26,617	26,957	25,654	25,335	25,151	26,061	26,825	26,297	27,818	30,813	35,622	Unique # placing in Performance each year	
% Change Performance		1.3%	-4.8%	-1.2%	-0.7%	3.6%	2.9%	-2.0%	5.8%	10.8%	15.6%	YOY % Change Performance total dogs placing	
% Change YOY	2008	2009	2010	2011	2012	2013	2014	2015	2016	2017	2018		
Registered Litters	N/A	-12.1%	-11.7%	-10.6%	-7.1%	-5.3%	-2.2%	0.4%	6.1%	6.9%	4.5%	These %'s are calculated to show the change each year from the previous year.	
Litter Complement	N/A	-11.6%	-10.7%	-9.4%	-5.7%	-4.1%	-1.1%	1.8%	8.6%	8.6%	4.4%		
Registered Dogs	N/A	-10.0%	-13.5%	-5.2%	-6.9%	-3.4%	0.0%	2.0%	7.6%	6.9%	3.5%		
% Change Relative 2008	2008	2009	2010	2011	2012	2013	2014	2015	2016	2017	2018		
Registered Litters	0.0%	-12.1%	-22.4%	-30.6%	-35.5%	-38.9%	-40.3%	-40.1%	-36.4%	-32.0%	-29.0%	These %'s are calculated to show the change each year compared to 2008.	
Litter Complement	0.0%	-11.6%	-21.1%	-28.5%	-32.6%	-35.3%	-36.1%	-34.9%	-29.3%	-23.3%	-19.9%		
Registered Dogs	0.0%	-10.0%	-22.1%	-26.2%	-31.2%	-33.6%	-33.7%	-32.4%	-27.2%	-22.2%	-19.4%		

All Breeds (AKC only)

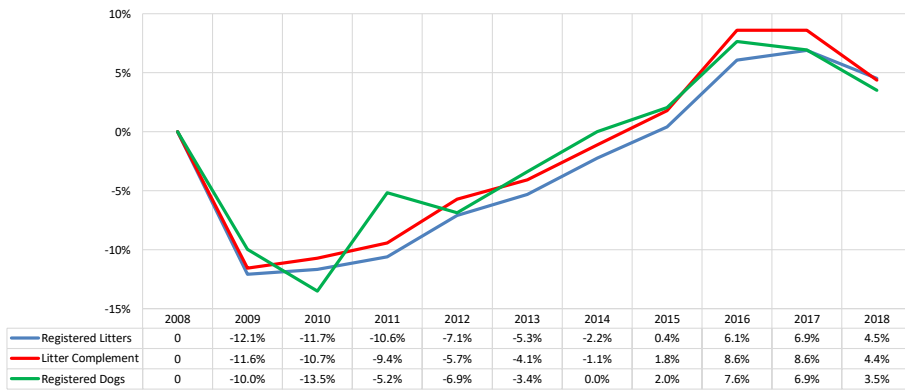
AKC Dog & Litter Registrations



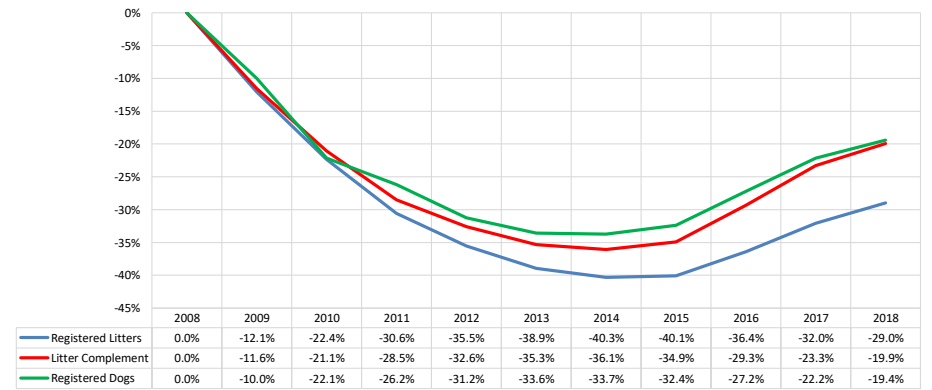
% of Each Year's Litter Complement that were Eventually Registered (2018 Register Pups to be determined)



% Change from Previous Year (YOY)

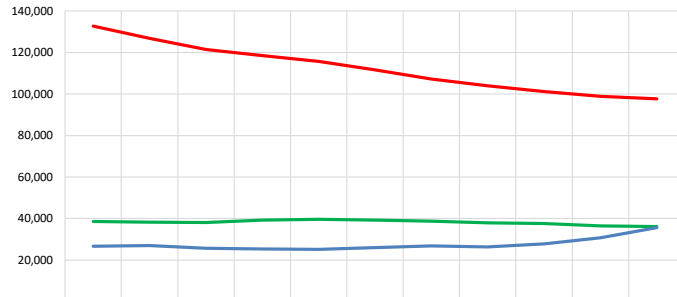


% Change Relative to 2008

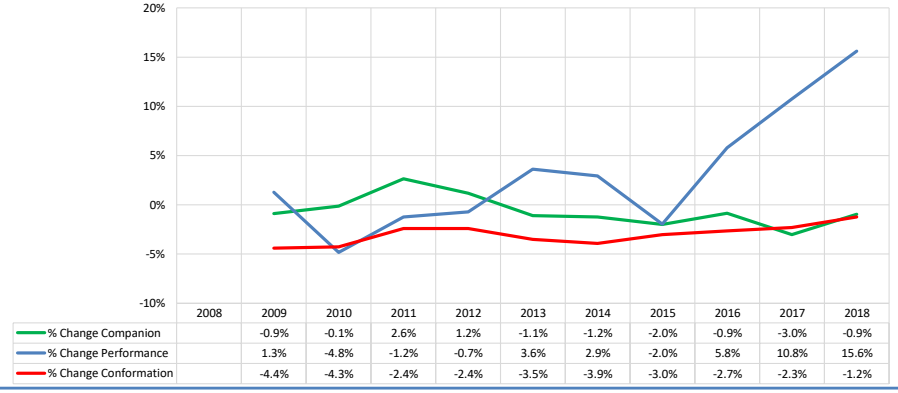


# All Breeds (AKC only)

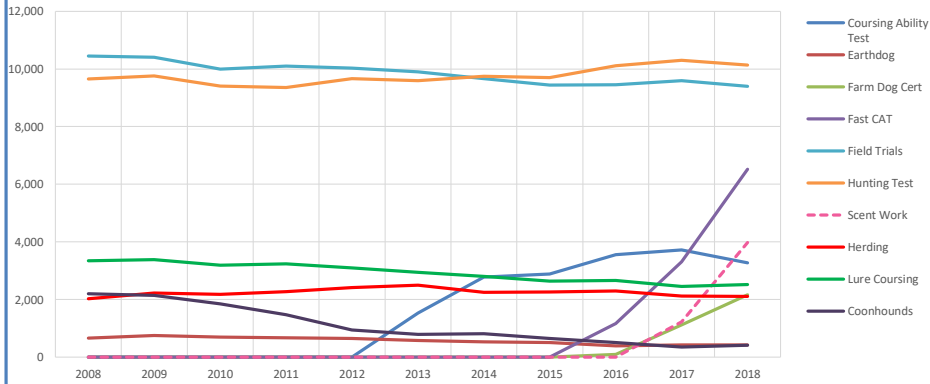
Competing: Total Unique Dogs by Sport Each Year



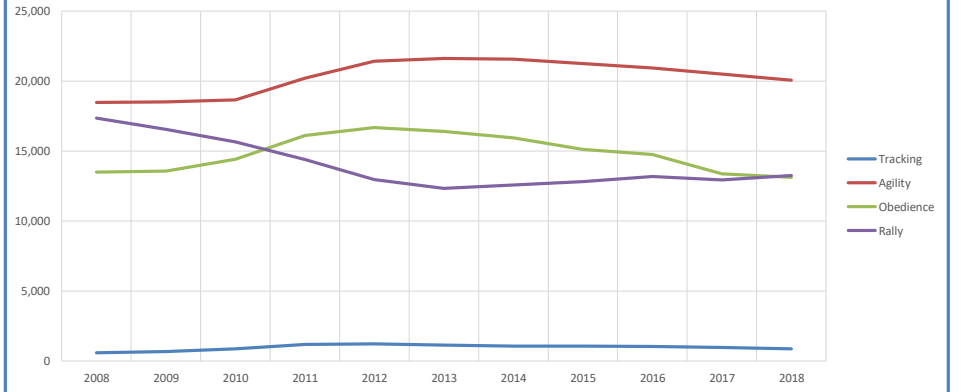
Competing: % Change Unique Total Dogs Year over Year by Sport



Performance: Total Unique Dogs Placing

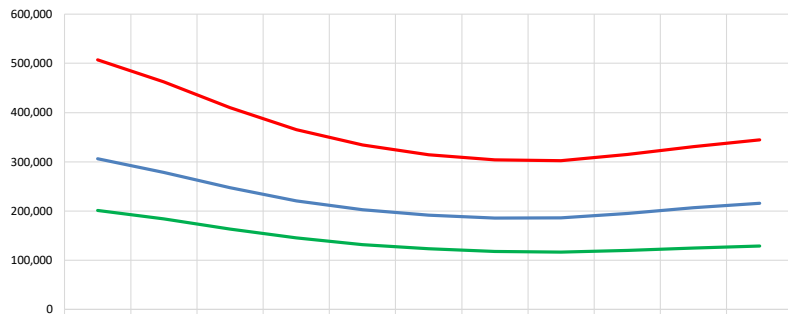


Companion: Total Unique Dogs Entered



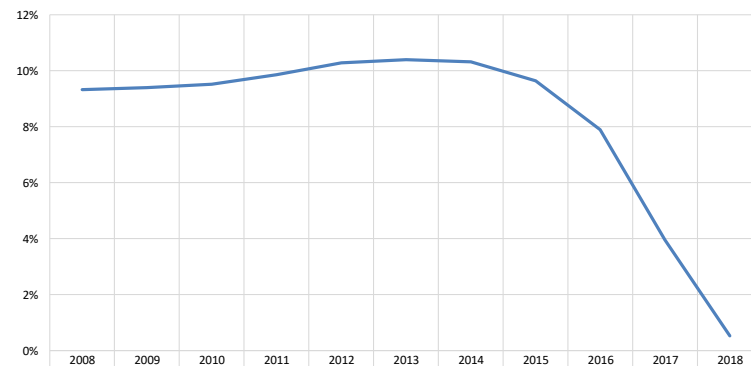
## All Breeds (AKC only)

### Breeding: Unique Individual Dogs & Bitches Bred Each Year



Unique Dogs (each year)	201,042	183,979	162,989	144,984	131,226	122,939	118,079	116,388	119,477	124,323	128,925
Unique Bitches (each year)	306,122	278,654	247,012	220,143	202,815	191,184	185,589	185,793	195,264	206,528	215,349
Total Bred (each year)	507,164	462,633	410,001	365,127	334,041	314,123	303,668	302,181	314,741	330,851	344,274

### % of Each Year's Litter Complement that have been Bred (to date)



% Complement Bred (to date)	9.3%	9.4%	9.5%	9.9%	10.3%	10.4%	10.3%	9.6%	7.9%	4.0%	0.5%
-----------------------------	------	------	------	------	-------	-------	-------	------	------	------	------

### Competing: % of Each Year's Litter Complement in Competition



Total Unique in Companion (each year)	0.57%	0.60%	0.67%	0.72%	0.71%	0.71%	0.69%	0.60%	0.46%	0.24%	0.04%
Total Unique Placing in Performance (each year)	0.7%	0.7%	0.8%	0.9%	1.0%	1.0%	1.0%	1.0%	0.8%	0.5%	0.1%
Total in Conformation (each year)	2.9%	3.0%	3.3%	3.5%	3.7%	3.7%	3.6%	3.4%	3.1%	2.7%	1.3%