

Maltese													
Low Entry Breed													
Metric	2008	2009	2010	2011	2012	2013	2014	2015	2016	2017	2018	Notes	
Registered Litters	8,708	7,497	6,185	5,186	4,202	3,547	3,006	2,693	2,546	2,557	2,493	# AKC litters registered each year	
Litter Complement	25,374	21,515	17,812	14,824	12,013	10,085	8,420	7,647	7,185	7,302	7,244	# Pups in each year's litters (known as the "Complement")	
Average Complement	2.91	2.87	2.88	2.86	2.86	2.84	2.80	2.84	2.82	2.86	2.91	Average # of pups per litter	
Individually Registered Pups (to date)	8,626	7,031	5,774	5,162	4,011	3,520	3,065	2,958	2,656	2,781	1,966	# Pups from each year's litters individually registered (to date)	
Actual Return Rate (to date)	34.0%	32.7%	32.4%	34.8%	33.4%	34.9%	36.4%	38.7%	37.0%	38.1%	27.1%	% Pups from each year's litters individually registered (to date)	
Limited Registrations (to date)	914	824	690	666	579	504	457	549	493	600	536	# Limited Registrations from each year's litters (to date)	
% Complement Registered Limited (to date)	3.6%	3.8%	3.9%	4.5%	4.8%	5.0%	5.4%	7.2%	6.9%	8.2%	7.4%	% Pups from each year's litters Registered as Limited (to date)	
Revoked Limited (to date)	8	10	5	9	5	1	2	3	-	3	-	# Revoked Limited Dogs from each year's litters (to date)	
Litters from Revoked Limited (to date)	8	10	5	6	5	1	2	3	-	3	-	Litters involving each year's Revoked Limited (to date)	
Complement Bitches Bred	1,459	1,319	1,036	835	753	699	616	578	483	326	27	Bitches from each year's litters that have been bred (to date)	
Complement Dogs Bred	728	677	518	420	359	309	281	263	232	145	17	Males from each year's litters that have been bred (to date)	
Total Complement Bred (to date)	2,187	1,996	1,554	1,255	1,112	1,008	897	841	715	471	44	Total from each year's litters that have been bred (to date)	
% Complement Bred (to date)	8.6%	9.3%	8.7%	8.5%	9.3%	10.0%	10.7%	11.0%	10.0%	6.5%	0.6%	% of each year's litters that have been bred (to date)	
Complement Bitches in Conformation	210	181	179	136	142	140	129	114	119	129	66	# Bitches from each year's litters in Conformation (to date)	
Complement Dogs in Conformation	122	112	127	100	107	104	84	87	69	61	45	# Males from each year's litters in Conformation (to date)	
Total Complement in Conformation (to date)	332	293	306	236	249	244	213	201	188	190	111	Total from each year's litters in Conformation (to date)	
% Complement in Conformation (to date)	1.3%	1.4%	1.7%	1.6%	2.1%	2.4%	2.5%	2.6%	2.6%	2.6%	1.5%	% of each year's litters in Conformation (to date)	
Total Complement in Companion (to date)	14	15	6	6	12	4	3	10	3	3	-	Total from each year's litters in Companion (to date)	
% Complement in Companion (to date)	0.06%	0.07%	0.03%	0.04%	0.10%	0.04%	0.04%	0.13%	0.04%	0.04%	0.00%	% of each year's litters in Companion (to date)	
Total Complement Placing in Performance (to date)	-	1	-	-	2	1	-	1	1	-	-	Total from each year's litters placing in Performance (to date)	
% Complement Placing in Performance (to date)	0.0%	0.0%	0.0%	0.0%	0.0%	0.0%	0.0%	0.0%	0.0%	0.0%	0.0%	% of each year's litters placing in Performance (to date)	

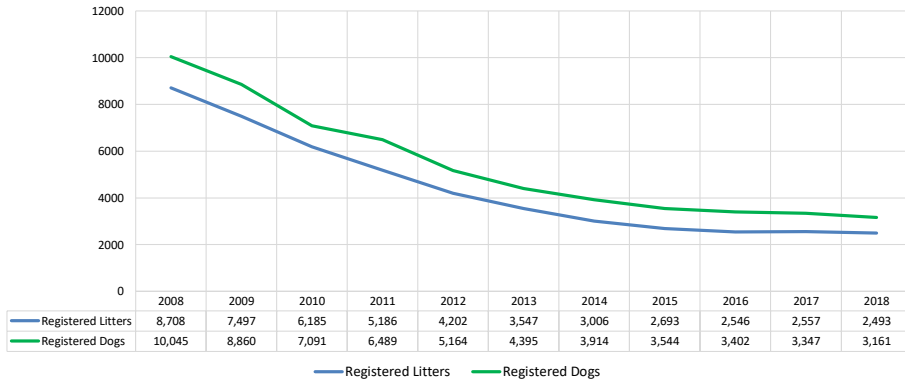
Dog #'s & Dog Related Stats													
AKC Dog Registrations	9,892	8,727	6,956	6,418	5,096	4,314	3,837	3,455	3,275	3,237	3,061	# Registered from AKC Litters during each year	
FSS Registrations	-	-	-	-	-	-	-	-	-	-	-	# of FSS Dog Registrations each year	
Conditional Registrations	118	77	103	46	26	37	26	17	31	21	10	# of Conditional Registrations each year	
Open Registrations	7	-	-	-	-	-	-	-	-	-	-	# of Open Registrations each year	
Foreign Registrations	28	56	32	25	42	44	51	72	96	89	90	# of Foreign-born Registrations each year	
Total Dogs Registered	10,045	8,860	7,091	6,489	5,164	4,395	3,914	3,544	3,402	3,347	3,161	Total Dog Registrations each year	
Unique Bitches Bred (each year)	7,116	6,781	5,578	4,713	3,826	3,219	2,735	2,429	2,261	2,156	2,081	Unique # of bitches bred each year	
Unique Dogs Bred (each year)	4,078	3,887	3,240	2,718	2,234	1,864	1,625	1,416	1,300	1,164	1,129	Unique # of males bred each year	
Total Bred (each year)	11,194	10,668	8,818	7,431	6,060	5,083	4,360	3,845	3,561	3,320	3,210	Unique # bred each year	
Unique Bitches in Conformation (each year)	359	357	307	296	255	266	240	231	211	224	215	Unique # of bitches in Conformation each year	
Unique Dogs in Conformation (each year)	256	221	200	196	187	191	190	161	152	126	129	Unique # of males in Conformation each year	
Total Unique in Conformation (each year)	615	578	507	492	442	457	430	392	363	350	344	Unique # in Conformation each year	
% Change Conformation		-6.0%	-12.3%	-3.0%	-10.2%	3.4%	-5.9%	-8.8%	-7.4%	-3.6%	-1.7%	YOY % Change Conformation total dogs	
Unique Bitches in Companion (each year)	27	28	29	27	28	34	29	24	19	27	19	Unique # of bitches in Companion each year	
Unique Dogs in Companion (each year)	24	28	32	32	33	28	27	17	10	13	15	Unique # of males in Companion each year	
Total Unique in Companion (each year)	51	56	61	59	61	62	56	41	29	40	34	Unique # in Companion each year	
% Change Companion		9.8%	8.9%	-3.3%	3.4%	1.6%	-9.7%	-26.8%	-29.3%	37.9%	-15.0%	YOY % Change Companion total dogs	
Unique Bitches Placing in Performance (each year)	-	-	-	-	-	1	1	1	-	2	1	Unique # of bitches placing in Performance each year	
Unique Dogs Placing in Performance (each year)	-	-	-	-	-	1	1	-	-	-	2	Unique # of males placing in Performance each year	
Total Unique Placing in Performance (each year)	-	-	-	-	-	2	2	1	-	2	3	Unique # placing in Performance each year	
% Change Performance		#DIV/0!	#DIV/0!	#DIV/0!	#DIV/0!	#DIV/0!	0.0%	-50.0%	-100.0%	#DIV/0!	50.0%	YOY % Change Performance total dogs placing	

% Change YOY	2008	2009	2010	2011	2012	2013	2014	2015	2016	2017	2018	
Registered Litters	N/A	-13.9%	-17.5%	-16.2%	-19.0%	-15.6%	-15.3%	-10.4%	-5.5%	0.4%	-2.5%	These %'s are calculated to show the change each year from the previous year.
Litter Complement	N/A	-15.2%	-17.2%	-16.8%	-19.0%	-16.0%	-16.5%	-9.2%	-6.0%	1.6%	-0.8%	
Registered Dogs	N/A	-11.8%	-20.0%	-8.5%	-20.4%	-14.9%	0.0%	-9.5%	-4.0%	-1.6%	-5.6%	

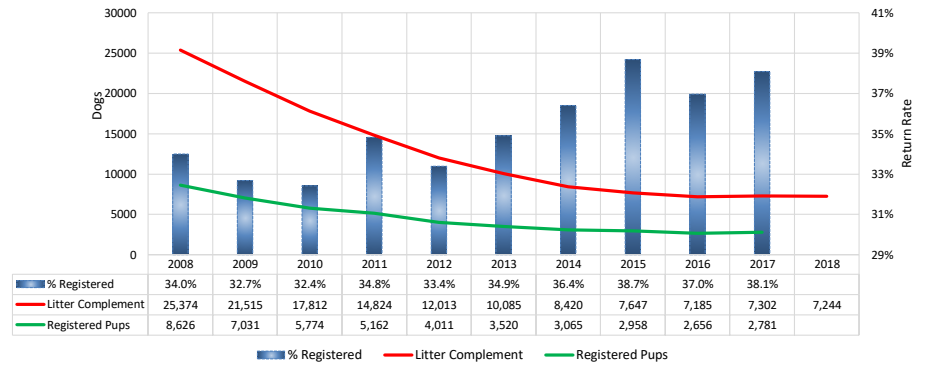
% Change Relative 2008	2008	2009	2010	2011	2012	2013	2014	2015	2016	2017	2018	
Registered Litters	0.0%	-13.9%	-29.0%	-40.4%	-51.7%	-59.3%	-65.5%	-69.1%	-70.8%	-70.6%	-71.4%	These %'s are calculated to show the change each year compared to 2008.
Litter Complement	0.0%	-15.2%	-29.8%	-41.6%	-52.7%	-60.3%	-66.8%	-69.9%	-71.7%	-71.2%	-71.5%	
Registered Dogs	0.0%	-11.8%	-29.4%	-35.4%	-48.6%	-56.2%	-61.0%	-64.7%	-66.1%	-66.7%	-68.5%	

Maltese

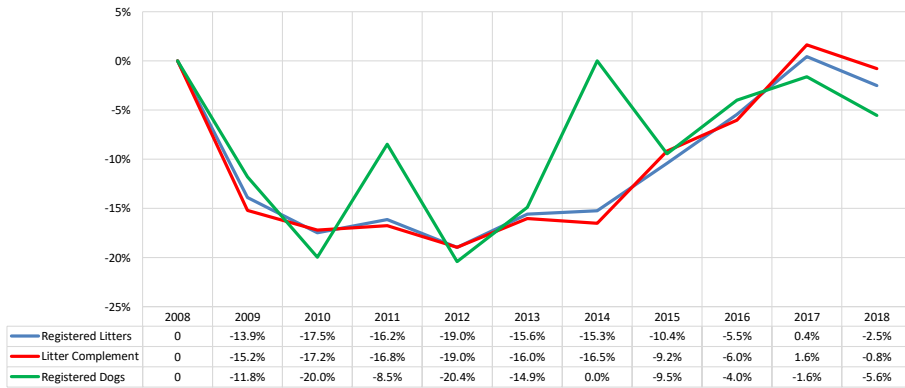
AKC Dog & Litter Registrations



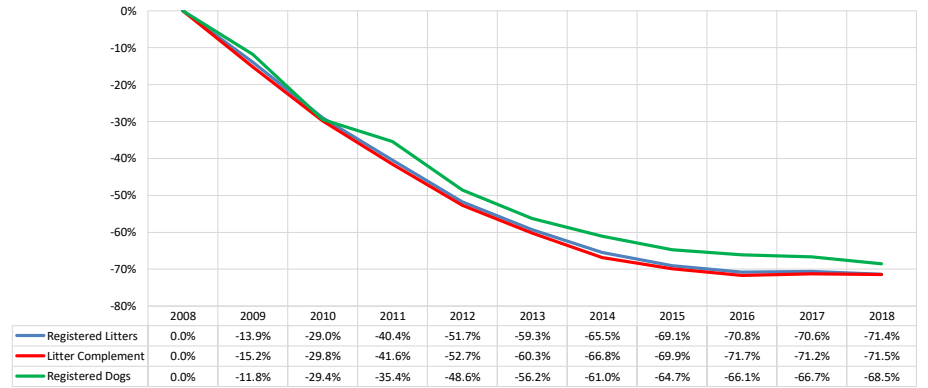
% of Each Year's Litter Complement that were Eventually Registered (2018 Register Pups to be determined)



% Change from Previous Year (YOY)

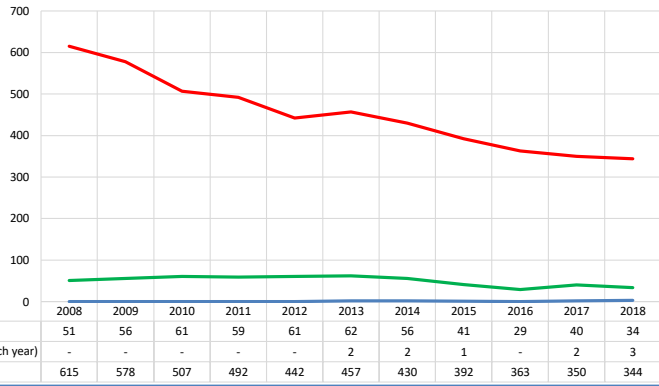


% Change Relative to 2008

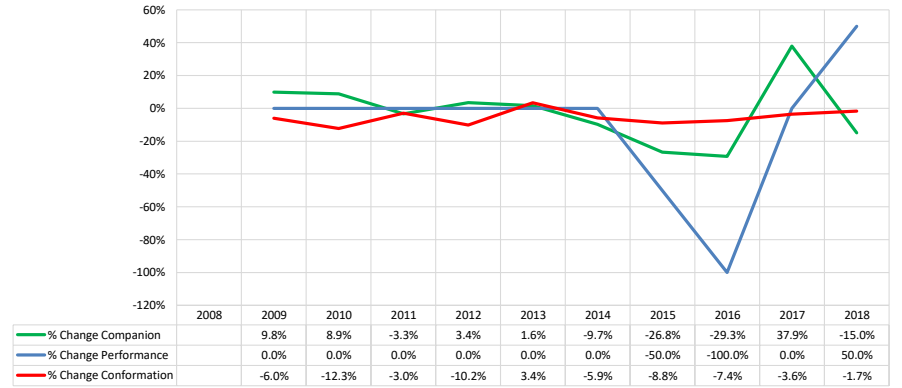


Maltese

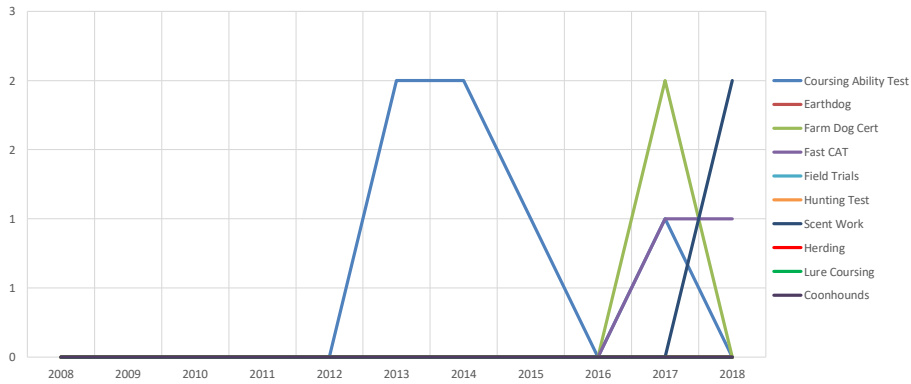
Competing: Total Unique Dogs by Sport Each Year



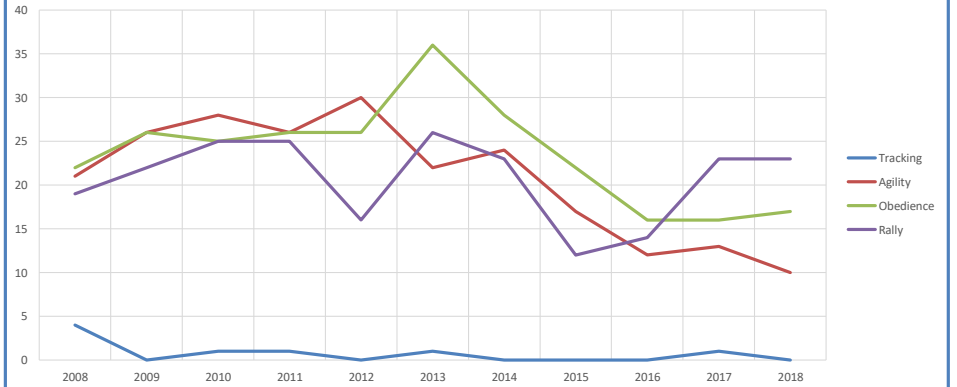
Competing: % Change Unique Total Dogs Year over Year by Sport



Performance: Total Unique Dogs Placing

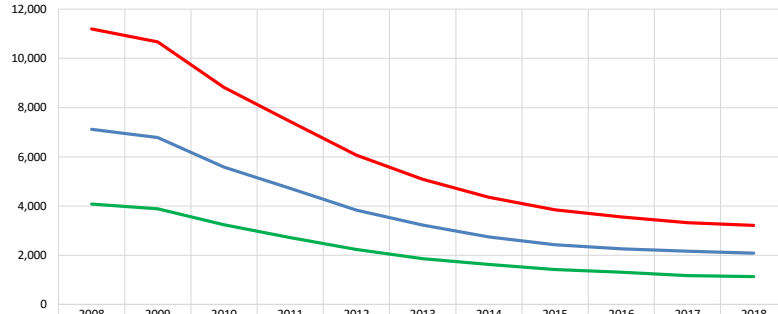


Companion: Total Unique Dogs Entered



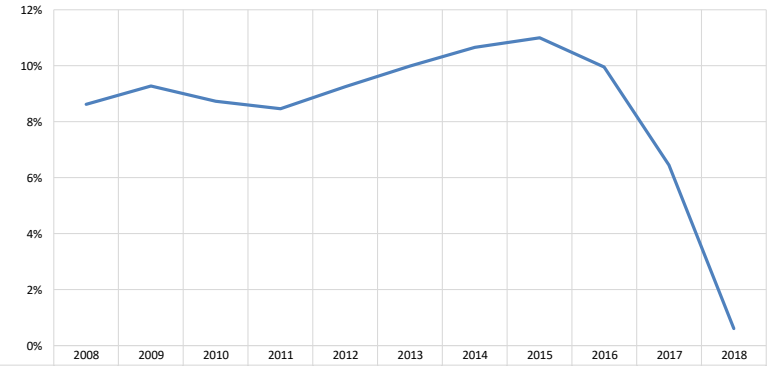
Maltese

Breeding: Unique Individual Dogs & Bitches Bred Each Year



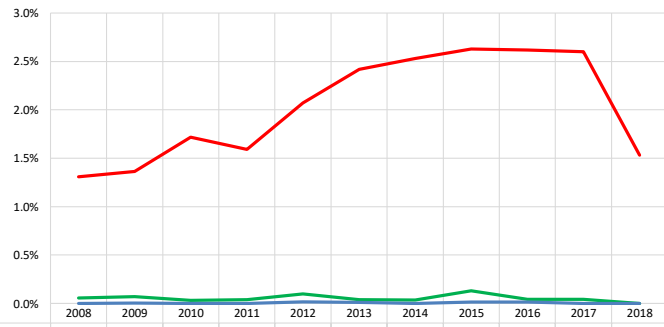
	2008	2009	2010	2011	2012	2013	2014	2015	2016	2017	2018
Unique Dogs (each year)	4,078	3,887	3,240	2,718	2,234	1,864	1,625	1,416	1,300	1,164	1,129
Unique Bitches (each year)	7,116	6,781	5,578	4,713	3,826	3,219	2,735	2,429	2,261	2,156	2,081
Total Bred (each year)	11,194	10,668	8,818	7,431	6,060	5,083	4,360	3,845	3,561	3,320	3,210

% of Each Year's Litter Complement that have been Bred (to date)



	2008	2009	2010	2011	2012	2013	2014	2015	2016	2017	2018
% Complement Bred (to date)	8.6%	9.3%	8.7%	8.5%	9.3%	10.0%	10.7%	11.0%	10.0%	6.5%	0.6%

Competing: % of Each Year's Litter Complement in Competition



	2008	2009	2010	2011	2012	2013	2014	2015	2016	2017	2018
Total Unique in Companion (each year)	0.06%	0.07%	0.03%	0.04%	0.10%	0.04%	0.04%	0.13%	0.04%	0.04%	0.00%
Total Unique Placing in Performance (each year)	0.0%	0.0%	0.0%	0.0%	0.0%	0.0%	0.0%	0.0%	0.0%	0.0%	0.0%
Total in Conformation (each year)	1.3%	1.4%	1.7%	1.6%	2.1%	2.4%	2.5%	2.6%	2.6%	2.6%	1.5%